



PRODUCT OVERVIEW

Wall Mounted Towel Holder - Brushed Gold

WIDTH 140 mm	DEPTH 20 mm
HEIGHT 60 mm	INSTALLATION Wall-mounted
MATERIAL Stainless steel	SHAPE L-shaped towel holder

PRODUCT SPECS

01

- Wall-mounted towel holder
- Brushed gold finish
- Stainless steel construction
- Length: 140 mm
- Height: 60 mm
- Depth: 20 mm
- Mount diameter: Ø25 mm
- Minimal modern design

FINISH VARIANTS

02



Light Luxury Gold – Brushed

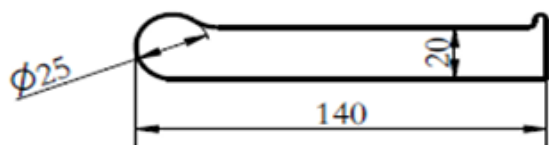
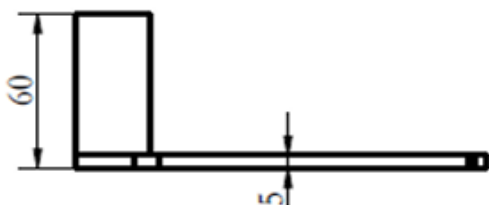
LG

PRODUCT DESCRIPTION

Wall-mounted towel holder with slim modern L-shaped design in brushed gold finish.

DIMENSIONAL DRAWING

MM



All dimensions are shown in millimetres unless otherwise stated. Site conditions, cut-out, trap system and mixer clearance should be verified before installation.

TECHNICAL DATA

03

Product type	Towel holder
Installation	Wall-mounted
Material	Stainless steel
Shape	L-shaped towel holder
Surface	Brushed Gold
Width	140 mm
Depth	20 mm
Height	60 mm
Tap hole	No
Overflow	No
Waste hole	Standard basin waste
Length	140 mm
Mount diameter	Ø25 mm

CODES & STANDARDS

04

